



10 Cleveland Avenue, Mumbles, Swansea, SA3 4JD

Offers Over £375,000

Positioned in the tucked-away location of Cleveland Avenue, this charming three-bedroom detached home offers a rare combination of privacy and stunning sea views over Bracelet Bay from the first and second bedrooms. With a generous floor area of 1,230 square feet and set on a 0.08-acre plot, the property provides ample space for comfortable living. The property offers three well proportioned reception rooms, offering versatility for family life or entertaining, along with two bathrooms for added convenience.

The rear garden is a true highlight, featuring a raised patio seating area that seamlessly leads to an elevated decked space, perfect for alfresco dining with plenty of room for tables and chairs. Beyond, a well-maintained lawn is complemented by a variety of mature flowers, trees, and shrubs, creating a tranquil outdoor retreat. A detached garden shed provides additional storage.

This unique home combines coastal views with a sense of seclusion, making it an ideal choice for those looking to enjoy the best of both worlds.

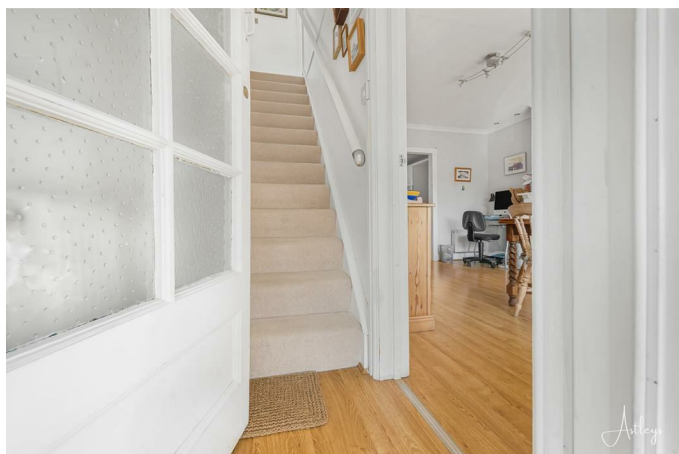
Entrance

Via a double glazed PVC door into the porch.

Porch

With a set of double glazed windows to the front and a frosted glazed hardwood door into the hall.

Hall



With stairs to the first floor. Radiator. Door to the dining room.

Dining Room 13'6" x 11'2" (4.118 x 3.408)



With a set of double glazed windows to the front. Two radiators. Feature fireplace. Opening to the kitchen.

Dining Room



Kitchen 10'8" x 9'5" (3.252 x 2.873)

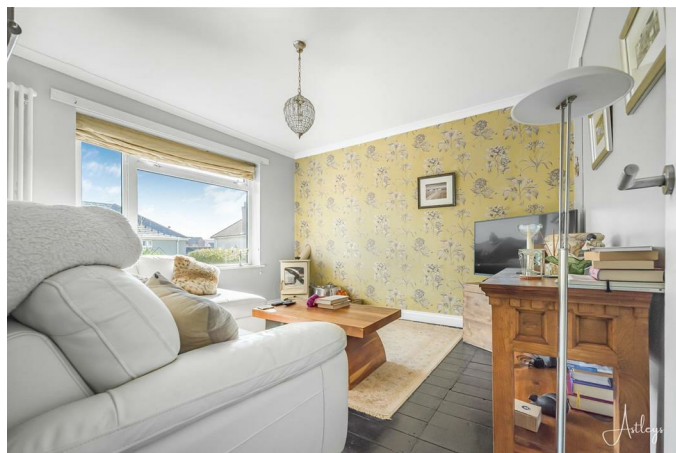


You have a opening to the inner hall and a door to the conservatory. Set of double glazed windows to the rear. The kitchen is well appointed, fitted with a range of base and wall units. You have a running work surface incorporating a one and a half bowl stainless steel sink and drainer unit. Five ring gas hob with extractor hood over. Integral double oven and grill. Space for fridge freezer. Space for washing machine. Space for dishwasher. Part tiled walls.

Kitchen



Lounge 12'3" x 11'2" (3.749 x 3.413)



You have a set of double glazed windows to the front. Wood burner set on slate hearth.

Conservatory 13'9" x 12'10" (4.214 x 3.927)



You have a double glazed PVC door to the side and a set of double glazed French patio doors to the side. Set of double glazed windows.

Lounge



Inner Hall

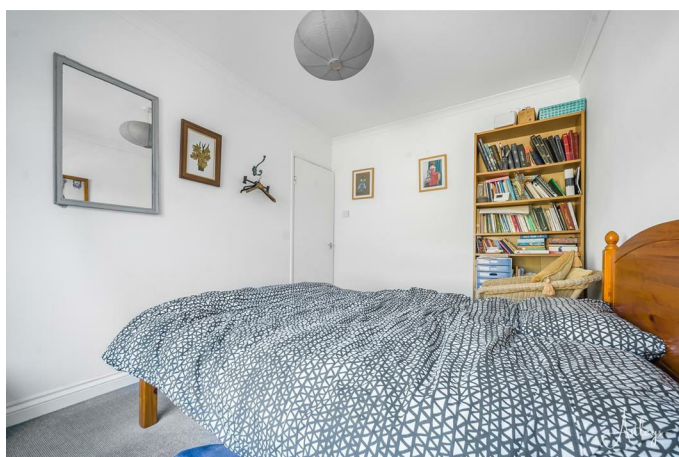
You have a door to the bathroom. Door to storage cupboard. Door to lounge. Door to bedroom three.

Bedroom Three 11'8" x 8'9" (3.579 x 2.688)

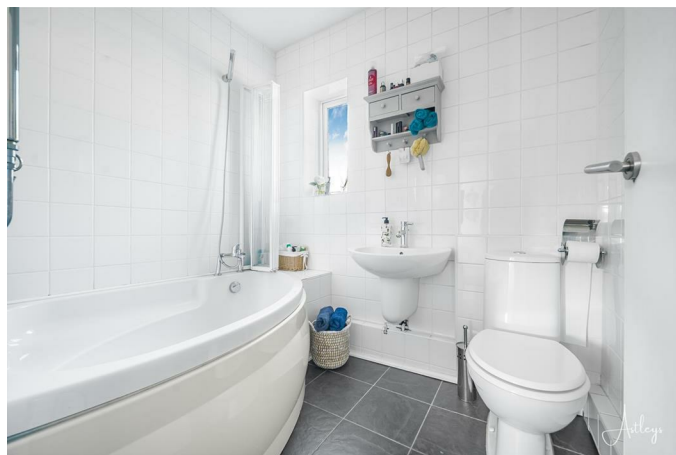


You have a double glazed window to the rear. Radiator.

Bedroom Three



Bathroom 5'6" x 7'0" (1.698 x 2.134)



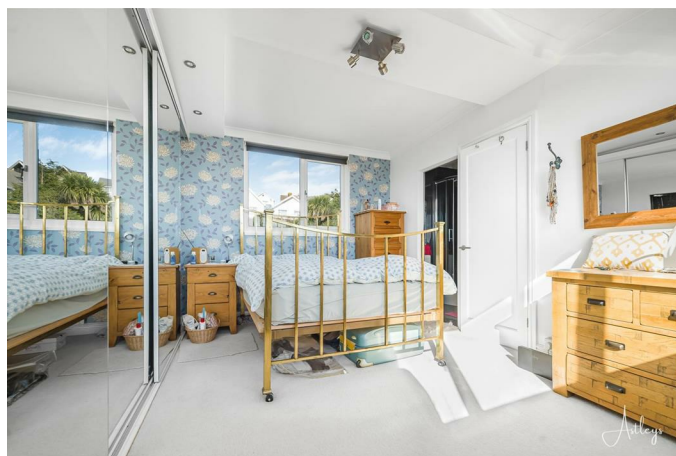
You have a frosted double glazed window to the rear. Bathroom suite comprising; corner bathtub with shower over. Chrome heated towel rail. WC. Wash hand basin. Tiled floor. Tiled walls. Extractor fan.

First Floor

Landing

Doors to bedrooms one and two. Spotlights.

Bedroom One 13'8" x 9'10" (4.176 x 3.018)

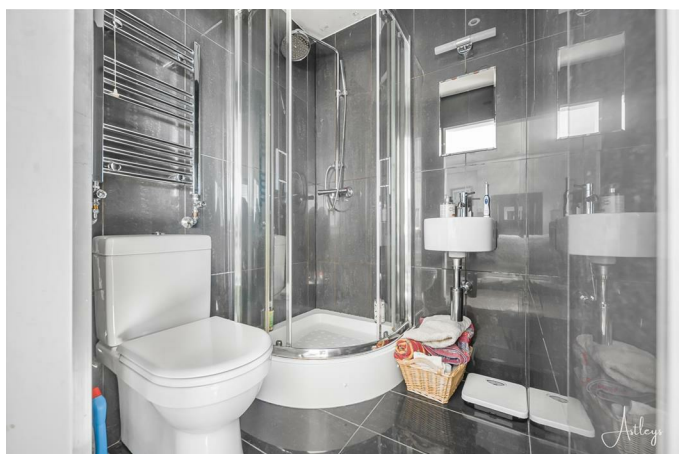


You have a set of double glazed windows to the rear. Set of double glazed windows to the front offering sea views of bracelet bay and beyond. Radiator. Door to eaves storage. Door to en suite. Sliding doors to built-in wardrobe.

Bedroom One



En-Suite 4'6" x 5'4" (1.377 x 1.629)



You have a corner shower cubicle with oversized shower head above. WC. Wash hand basin. Chrome heated towel rail. Tiled floor. Tiled walls. Spotlights. Extractor fan.

Bedroom Two 13'8" x 9'8" (4.191 x 2.960)



You have a set of double glazed windows to the rear. Set of double glazed windows to the front again offering sea views of bracelet bay. Radiator.

Bedroom Two



External

Front



You have a raised graveled garden with side access leading to the rear garden.

Another Aspect



Aerial Aspect



Aerial Aspect

Aerial Aspect

Aerial Aspect



Rear



You have a raised patio seating area which in turn leads to a raised decked area with ample room for tables and chairs. Lawned garden. Detached garden shed. Rear garden is home to a variety of flowers, trees and shrubs.

Rear



Services

Mains electric. Mains sewerage. Mains water. Mains Gas. Broadband type - full fibre. Mobile phone coverage available with EE, O2 & Vodafone.

Council Tax Band

Council Tax Band - F

Tenure

Freehold.

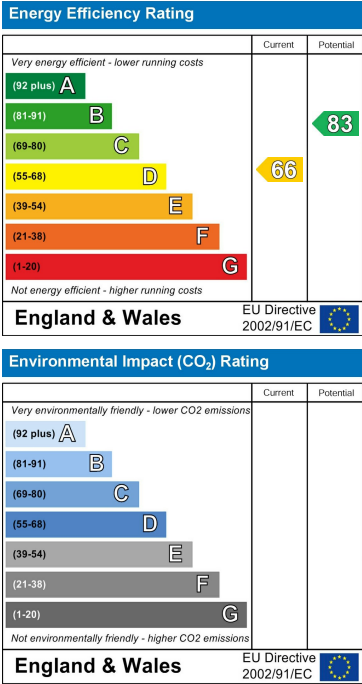
Floor Plan



Area Map



Energy Efficiency Graph



These particulars, whilst believed to be accurate are set out as a general outline only for guidance and do not constitute any part of an offer or contract. Intending purchasers should not rely on them as statements of representation of fact, but must satisfy themselves by inspection or otherwise as to their accuracy. No person in this firms employment has the authority to make or give any representation or warranty in respect of the property.